



**“Eagles Talon”
for Taurus™ TX-22
Installation Instructions
V1.0**

www.tandemkross.com

For more info or support contact CustomerService@tandemkross.com

Attention:

Before you begin, be certain that the magazine is removed and the chamber is clear.

You will need a 1/16" drift, a brass or delrin rod (~.25" diameter), a mallet, a small set of needle nose pliers.

1. Remove the slide from the frame and remove the recoil spring and barrel



2. Depress retainer slide cap with allen wrench. The cover plate can start to slide with spring and detent compressed.



3. Slide the plate down being careful not to allow the spring and detent to shoot out. It is best to aim spring in a safe direction prior to sliding the plate.



4. Slide the striker housing sub-assembly out of the rear of the slide. It is easier if you can keep the housing halves, striker, striker block and spring together. If it falls apart it is not hard to put everything back together. Take extra care not to lose the spring. The spring is very small and can be very difficult to find (speaking from personal experience).



5. Remove the spring and detent from the rear of the breech block (impact insert) with small needle nose pliers or tweezers.



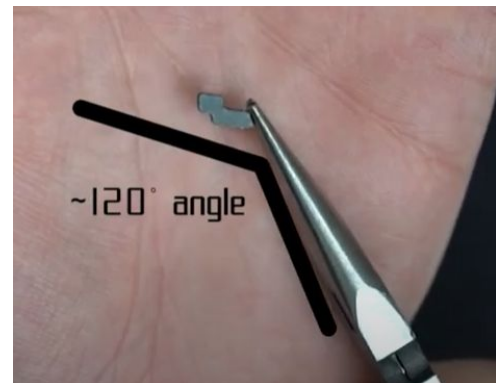
6. Using 1/16" drift, push factory extractor towards the front of the slide.



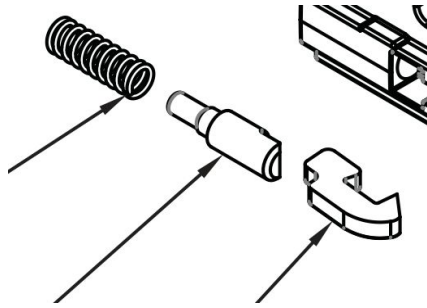
7. Using needle nose pliers manipulate the extractor out the front of the breech block. Shaking or tapping the slide may help coerce the extractor out of the breech block.



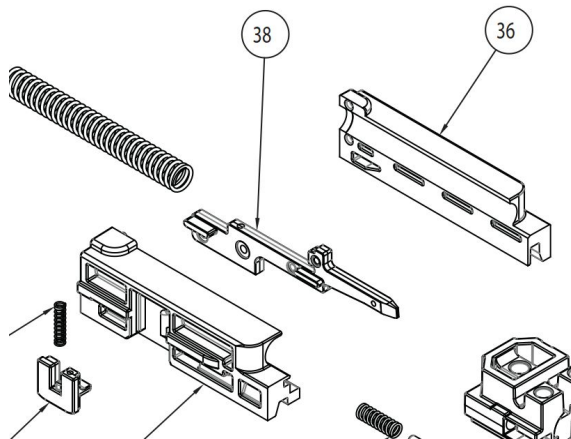
8. With extractor oriented in the needle nose plier as shown right. Insert extractor into breech block. Rotate extractor into position.



9. Install the extractor detent and spring. Notice that when the detent is installed in the proper orientation that approximately three coils of the compression spring are exposed (shown to the right). The step in the detent needs to align with the step in the rear of the extractor. If the detent is not installed properly there will be approximately five coils exposed.



10. Install striker block sub-assembly. The exploded view is from the Tx-22 manual.



11. Install the spring and detent into the striker block. Compress the spring and detent and slide the cover plate into position.



12. Actuate the extractor to make sure that it moves freely and spring returns it to home position.

13. Put the slide back on frame and the installation is complete. Enjoy your new TANDEM KROSS Eagle's Talon Extractor.